



The next Larry King?

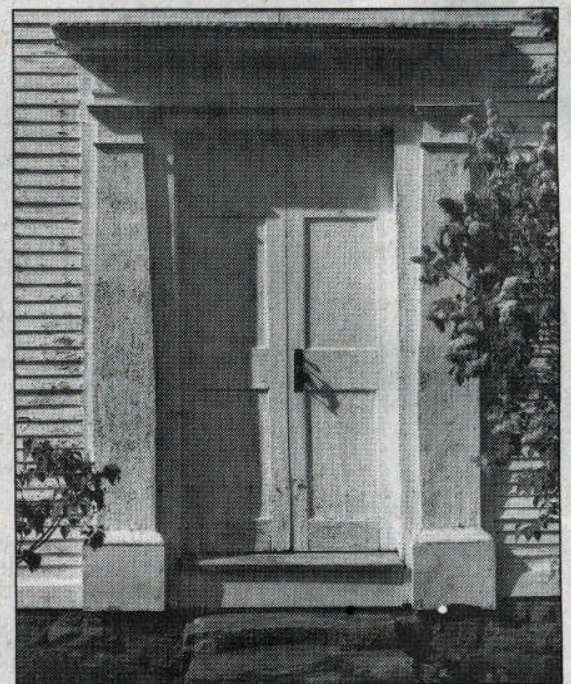
According to rumors, British talk show host Piers Morgan is poised to take over a spot on CNN. **Tuned In, D12.**

D

THURSDAY, JULY 15, 2010
CONCORD MONITOR
concordmonitor.com



SPECIAL SPACES



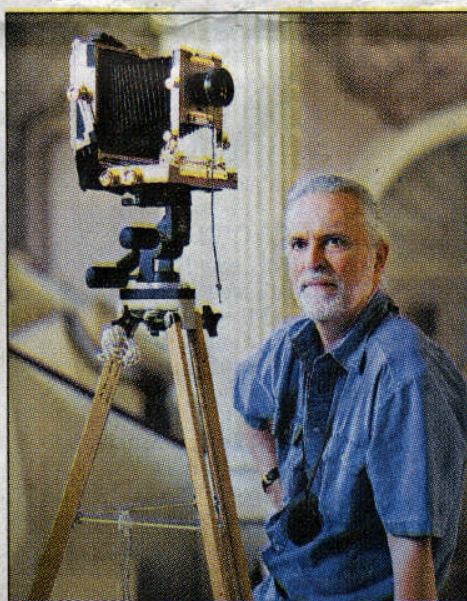
Photographer memorializes New England's meetinghouse history in new collection

By VICTORIA SHOULDIS
For the Monitor

One afternoon in 2006, a cloud rolled in high above the old meetinghouse in Jaffrey. It was wispy and stood out against the otherwise absolutely clear sky, almost as if it was there to offer protection to the 235-year-old building. And Paul Wainwright was there.

He wasn't there by chance. Wainwright was in the middle of a years-long project to photograph many of the remaining meetinghouses throughout New England. He uses an old-fashioned, large-format film camera (the larger negatives allow for depth of detail that 35mm misses), the kind you might see in an old movie, where the photographer stands behind a camera on a tripod, his head under a cloth studying the image, which, by the way, is upside down.

His goal was not to create glossy, ready-for-postcard portraits of the proud old buildings where townspeople once gathered to both vote on community business and to share their faith. He set out to photograph the history, the souls of those buildings and the souls of those who gathered in them. He documented not just the outside of the buildings but the rugged roof beams, the pews, the knotted and century-old doors, and the graveyards, where those same townspeople set off for eternity. His portrait of the meetinghouse on Star Island captures not just the interior but a granite monument dedicated to the Rev. John



Courtesy photo

Paul Wainwright

Tucke, who served in the community in the 1700s.

The result is *A Space For Faith: The Colonial Meetinghouses of New England*, a collection of photos, taken with only natural light, soulful and sacred, artistic and historic. Wainwright will appear at Gibson's Bookstore in Concord on Saturday from 11 to 1 p.m., during Concord's Market Days.

"These buildings, that served as places for town business and also for worship, resonated with me."

Paul Wainwright

He spoke to the *Monitor* recently about his work.

Your photo of that meetinghouse in Jaffrey with the cloud overhead was clearly not happenstance. How did you get to that perfect shot?

Oh, I knew that cloud was coming in over the building, but as it was moving, it would evaporate for a while. I knew what I wanted, so I waited. I was there waiting for an hour, hour and a half. I ate my lunch and hung out. Eventually, the cloud went where it was supposed to.

There are other examples of solid old structures in New England – schoolhouses, covered bridges – what was it specifically about meetinghouses that spoke to you?

In general, I'm drawn to old buildings.

See **MEETINGHOUSES – D4**

Photos by PAUL WAINWRIGHT

Top Left: "View from the Pulpit, Old Meeting House (1773), Sandown, New Hampshire," 2007.

Top Right: "Door, Olde Meeting House (1755), Danville, New Hampshire," 2004.